

67 MINIATURE ENCLOSED INDUSTRIAL RELAY

UL CONTACT LOAD RATINGS TABLE

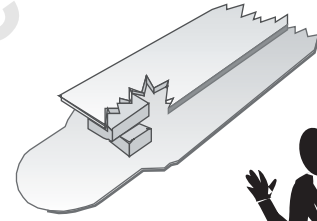
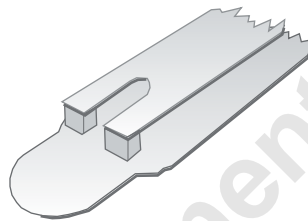


| CONTACT CONFIGURATION | CURRENT OR HORSE POWER | LOAD VOLTAGE | LOAD VOLTAGE FREQUENCY | TYPE OF LOAD |
|---------------------------|------------------------|--------------|------------------------|--------------|
| 1 POLE THRU 6 POLES | 5 AMP | 120 VAC | 50/60 Hz | RESISTIVE |
| | 5 AMP | 28 VDC | DC | RESISTIVE |
| | 3 AMP | 120 VAC | 50/60 Hz | RESISTIVE |
| | 3 AMP | 28 VDC | DC | RESISTIVE |

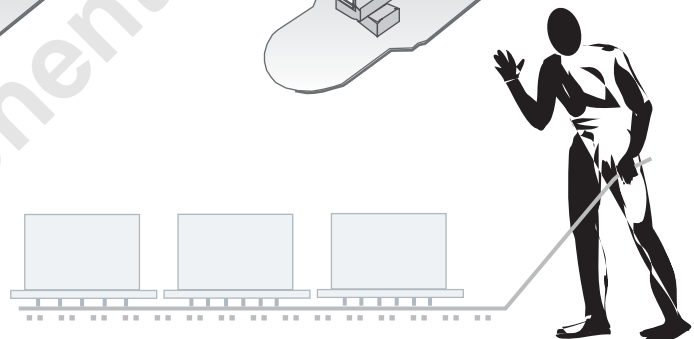


**BIFURCATED CONTACTS
(LOW LEVEL APPLICATIONS)**

**STANDARD CONTACTS
(5 AMP CROSS BAR)**



STANDARD CLASS 67 MINIATURE INDUSTRIAL RELAYS ARE DESIGNED FOR APPLICATIONS REQUIRING DPDT TO 6PDT CONTACTS WHERE SPACE AND WEIGHT ARE OF PRIME IMPORTANCE. SHATTER RESISTANT, SEE-THRU PLASTIC COVERS ARE UTILIZED TO PROTECT AGAINST DUST, TAMPERING AND ELECTRICAL SHOCK. THE 67T MODELS HAVE BIFURCATED CONTACTS AND ARE DESIGNED FOR LOW LEVEL SWITCHING APPLICATIONS.



GENERAL SPECIFICATIONS (@ 25°C)

| | UNITS | |
|---|--------------|-------------------------|
| COIL | | |
| Pull-in Voltage AC (50/60 Hz): | % of nominal | 80 |
| Pull-in Voltage DC: | % of nominal | 75 |
| Dropout Voltage AC (50/60 Hz): | % of nominal | 10 |
| Dropout Voltage DC: | % of nominal | 10 |
| Maximum Voltage: | % of nominal | 120 |
| Resistance: | % ± | 10 |
| Coil Power AC (60 Hz): | VA | 2.75 |
| Coil Power DC: | W | 0.45 |
| Insulation System Per UL Standard 1446: | | Class B (130 °C) |
| Duty: | | Continuous |
| CONTACTS | | |
| Contact Material: | | Silver alloy |
| Contact Rating AC Amperes (AC1): | | 5/3 |
| Contact Rating AC Voltage: | A | 120 / 120 |
| Contact Rating DC Amperes (DC1): | V | 5/3 |
| Contact Rating DC Voltage: | A | 28 / 28 |
| Minimum Recommended Load: | V | 100 @ 5 VDC or 0.5 W |
| TIMING | | |
| Operate Time: | ms | 25 |
| Release Time: | ms | 20 |

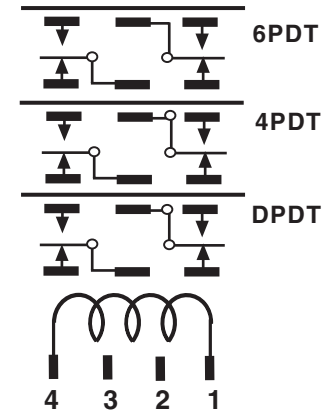
| | UNITS | |
|--------------------------------|-------------------------|---|
| DIELECTRIC STRENGTH | | |
| Coil to Contacts: | V rms | 1500 |
| Across Open Contacts: | V rms | 1000 |
| Pole to Pole: | V rms | 1000 |
| Contacts to Frame: | V rms | 1000 |
| Insulation Resistance: | megohms minimum @VDC | 1000 @ 500 |
| VIBRATION RESISTANCE | | |
| Functional: | g's | 10 |
| SHOCK RESISTANCE | | |
| Functional: | g's | 20 |
| TEMPERATURE | | |
| Operating, AC Lower: | °C | -40 |
| Operating, AC Upper: | °C | +60 |
| Operating, DC Lower: | °C | -40 |
| Operating, DC Upper: | °C | +60 |
| Storage, Lower: | °C | -40 |
| Storage, Upper: | °C | +130 |
| LIFE EXPECTANCY | | |
| Electrical @ Rated Load (AC1): | operations | 100,000 |
| Mechanical @ no Load : | operations | 10,000,000 |
| MISCELLANEOUS | | |
| Operating Position: | | Any |
| Insulation Material: | 94V-0 | Molded plastic |
| Enclosure Material: | 94V-0 | Polycarbonate |
| Cover Protection Category: | IP | 40 |
| Terminals: | Inch (mm) | 0.10, 0.04 x 0.01 (2.54, 1.01 x 0.25) |
| Weight: | grams | 22 to 40 |

67 MINIATURE ENCLOSED INDUSTRIAL RELAY



DPDT THRU 6PDT 3 & 5 AMPS

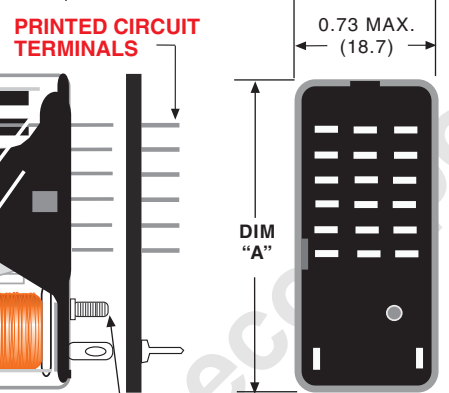
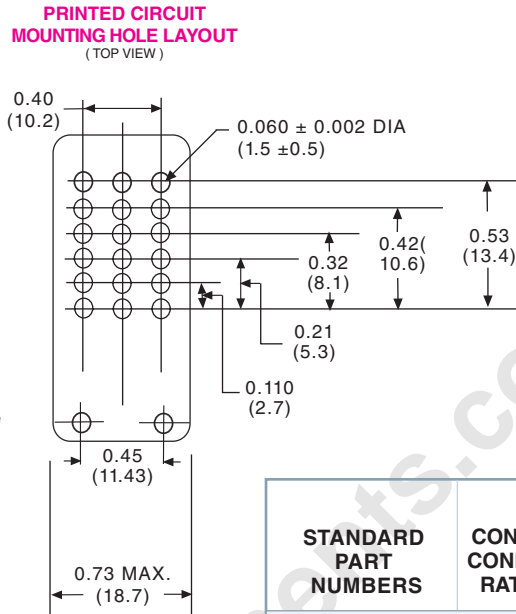
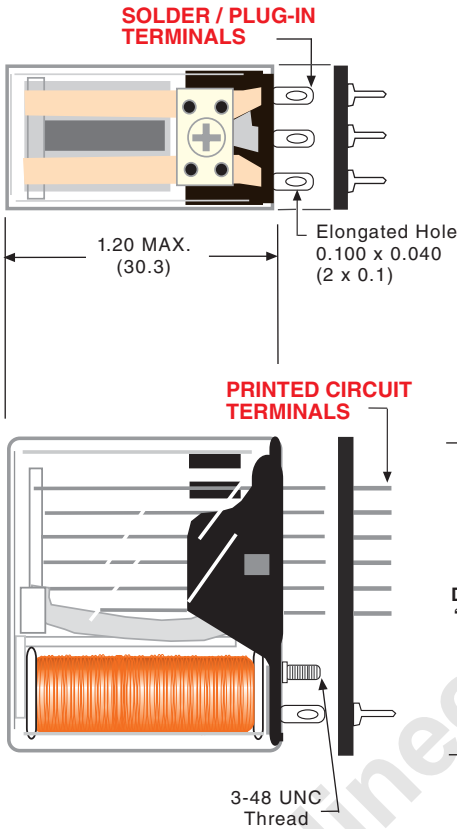
WIRING DIAGRAM



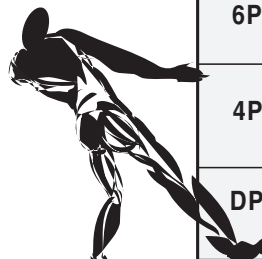
Mating Sockets

70-303-1, 70-305-1, 70-307-1: **SOLDER**
70-304-1, 70-306-1, 70-308-1: **PRINTED CIRCUIT**
See section 7

OUTLINE DIMENSIONS
DIMENSIONS SHOWN IN INCHES & (MILLIMETERS).



DIMENSIONS



| CONTACT CONFIGU | "A" |
|-----------------|--------------|
| 6PDT | 1.374 (34.9) |
| 4PDT | 1.156 (29.4) |
| DPDT | 0.978 (24.8) |

| STANDARD PART NUMBERS | CONTACT CONFIGURATION | COIL MEASURED @ 25 °C | |
|--|-----------------------|-----------------------|---------------------------|
| | | NOMINAL INPUT VOLTAGE | NOMINAL RESISTANCE (OHMS) |
| DC OPERATED COIL - SOLDER/PLUG-IN, 5 AMP | | | |
| W67RCSX-1 | DPDT | 5 VDC | 52 Ω |
| W67RCSX-2 | DPDT | 12 VDC | 185 Ω |
| W67RCSX-3 | DPDT | 24 VDC | 700 Ω |
| W67RCSX-4 | DPDT | 48 VDC | 2,500 Ω |
| W67RCSX-5 | DPDT | 110/125 VDC | 15,000 Ω |
| W67RCSX-6 | 4PDT | 5 VDC | 52 Ω |
| W67RCSX-7 | 4PDT | 12 VDC | 185 Ω |
| W67RCSX-8 | 4PDT | 24 VDC | 700 Ω |
| W67RCSX-9 | 4PDT | 48 VDC | 2,500 Ω |
| W67RCSX-10 | 4PDT | 110/125 VDC | 15,000 Ω |
| W67RCSX-12 | 6PDT | 12 VDC | 90 Ω |
| W67RCSX-13 | 6PDT | 24 VDC | 430 Ω |
| DC OPERATED COIL-BIFURCATED CONTACTS, 3 AMP | | | |
| W67TRCSX-2 | DPDT | 12 VDC | 185 Ω |
| W67TRCSX-3 | DPDT | 24 VDC | 700 Ω |
| W67TRCSX-7 | 4PDT | 12 VDC | 185 Ω |
| W67TRCSX-8 | 4PDT | 24 VDC | 700 Ω |
| W67TRCSX-12 | 6PDT | 12 VDC | 90 Ω |
| W67TRCSX-13 | 6PDT | 24 VDC | 430 Ω |
| DC OPERATED PRINTED CIRCUIT, 5 AMP | | | |
| W67RPCX-2 | DPDT | 12 VDC | 185 Ω |
| W67RPCX-3 | DPDT | 24 VDC | 700 Ω |
| W67RPCX-7 | 4PDT | 12 VDC | 185 Ω |
| W67RPCX-8 | 4PDT | 24 VDC | 700 Ω |
| W67RPCX-12 | 6PDT | 12 VDC | 90 Ω |
| W67RPCX-13 | 6PDT | 24 VDC | 430 Ω |
| AC OPERATED COIL - SOLDER/PLUG-IN, 5 AMP | | | |
| W67ARCSX-5 | DPDT | 110/120 VAC, 50/60Hz | 9000 Ω |
| W67ARCSX-10 | 4PDT | 110/120 VAC, 50/60Hz | 8000 Ω |
| W67ARCSX-15 | 6PDT | 110/120 VAC, 50/60Hz | 8000 Ω |
| DC OPERATED COIL ULTRA SENSITIVE -SOLDER/PLUG-IN, 3 AMP | | | |
| W67SCSX-1 | DPDT | 9.4 MADC | 1,000 Ω |
| W67SCSX-2 | DPDT | 6.4 MADC | 2,500 Ω |
| W67SCSX-3 | DPDT | 4.5 MADC | 5,000 Ω |
| W67SCSX-6 | 4PDT | 13.7 MADC | 1,000 Ω |
| W67SCSX-7 | 4PDT | 9.1 MADC | 2,500 Ω |
| W67SCSX-8 | 4PDT | 6.5 MADC | 5,000 Ω |

RETROFITS POTTER & BRUMFIELD R10.
SEE END OF SECTION 1 FOR CROSS REFERENCE